



# MONTHLY MEMBERSHIP PROGRESS REPORT

District 26 M4

Results as of: 6/30/2017

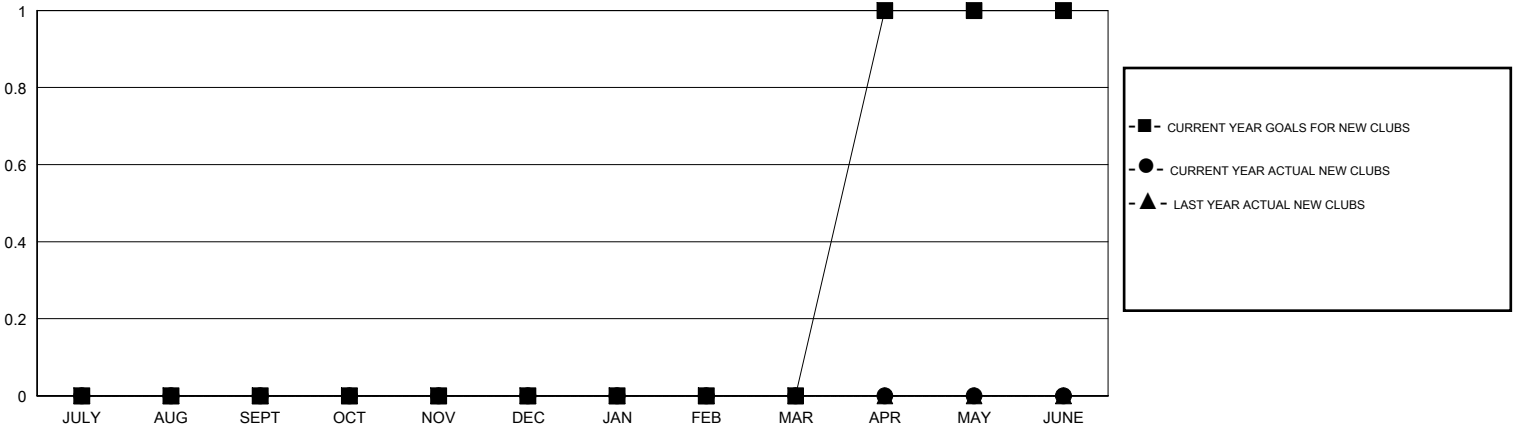
GMT: OPEN

LOCATION MISSOURI

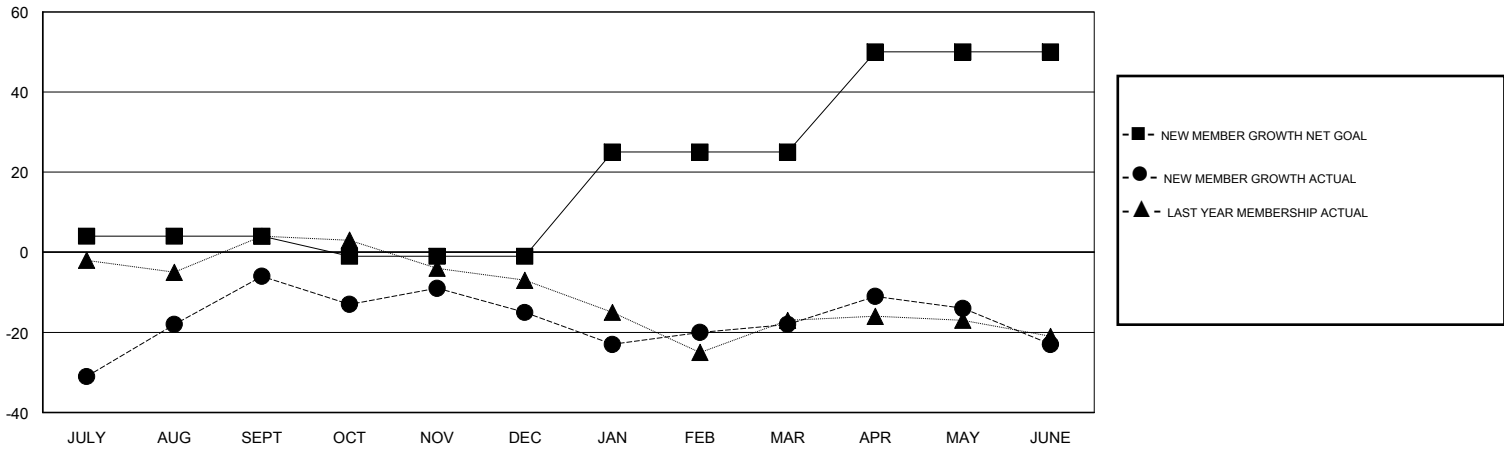
GMT CA

Clubs				Members			
RESULTS FOR 2016-2017				RESULTS FOR 2016-2017			
QUARTER	NEW CLUB GOAL	NEW CLUBS	DROPPED CLUBS	QUARTER	NEW MEMBER GROWTH NET GOAL (not reinstated or transfers)	NEW MEMBER GROWTH ACTUAL (not reinstated or transfers)	DROPPED MEMBERS ACTUAL (including transfers)
JULY/AUG/SEPT	0	0	1	JULY/AUG/SEPT	4	49	55
OCT/NOV/DEC	0	0	0	OCT/NOV/DEC	-5	18	27
JAN/FEB/MAR	0	0	1	JAN/FEB/MAR	26	45	48
APR/MAY/JUNE	1	0	0	APR/MAY/JUNE	25	41	46

GOALS AND ACTUAL NEW CLUBS CUMULATIVE



GOALS AND ACTUAL MEMBERS CUMULATIVE



DROPPED CLUBS: 2	38 CLUBS OF 60 ADDED 1 OR MORE NEW MEMBERS	<u>GENDER DISTRIBUTION</u>	
DROPPED MEMBERS		MALE	1,004 (76.06%)
DECEASED	18	FEMALE	316 (23.94%)
CLUB CANCELLED	5	TOTAL FAMILY UNIT MEMBERS	220
OTHER	152	FAMILY MEMBERS PAYING HALF DUES	112
TOTAL	175		

[CLICK HERE FOR CUMULATIVE MEMBERSHIP DATA](#)